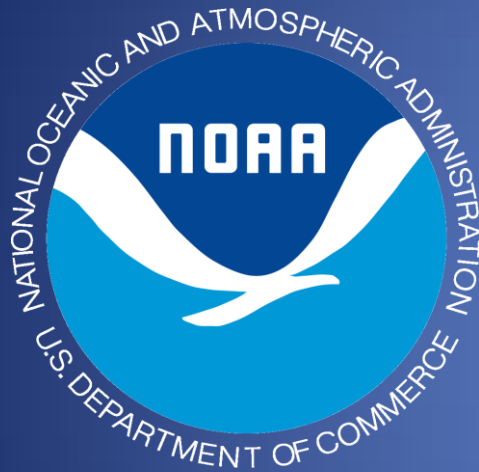


# Climate Ready Great Lakes Cities

*Lessons for Justice and  
Information Driven Adaptation*

Samuel Molnar

April 22, 2016



Wide range of  
adaptation tools,  
products, and  
services

Share knowledge &  
network



Bi-national coalition of Great  
Lakes Mayors & city officials

1. TRAVERSE CITY, MI
2. MILWAUKEE, WI
3. EVANSTON, IL
4. NIAGARA REGION, ON
5. GODERICH, ON



# THE PROBLEM WITH “PRESCRIPTIVE”

Adaptation actions should be unique to each locality, and there is no silver bullet



# CITIES NEED CROSS- ORGANIZATIONAL ADAPTATION MINDSET

- awareness of impacts
- awareness of vulnerable operations
- capacity to incorporate adaptation into efforts

# ADAPTATION SHOULD HAPPEN EQUALLY

ADAPTATION WILL HAPPEN

# ADAPTATION SHOULD HAPPEN JUSTLY



# ADAPTATION SHOULD HAPPEN JUSTLY

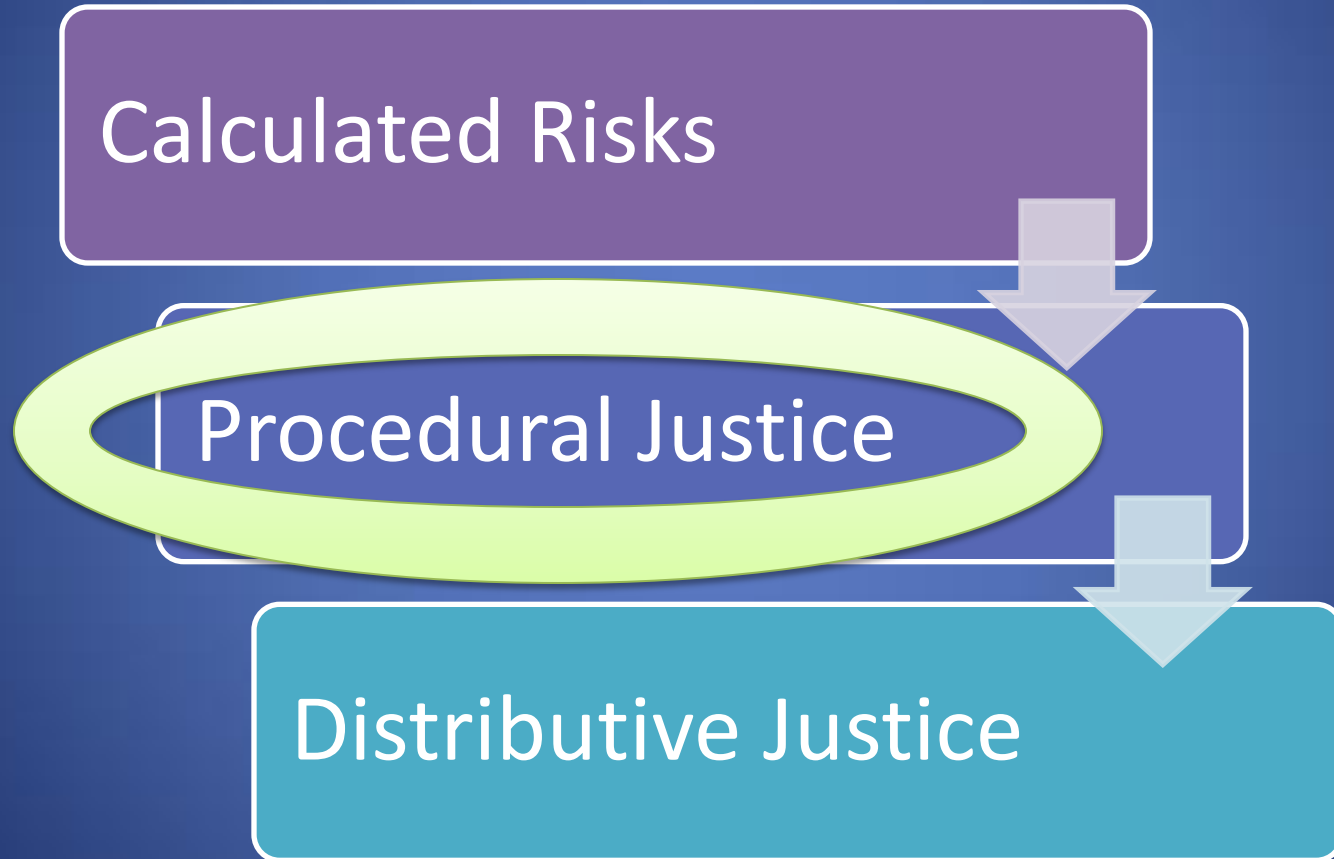
Calculated Risks

```
graph TD; A[Calculated Risks] --> B[Procedural Justice]; B --> C[Distributive Justice];
```

Procedural Justice

Distributive Justice

# ADAPTATION SHOULD HAPPEN JUSTLY



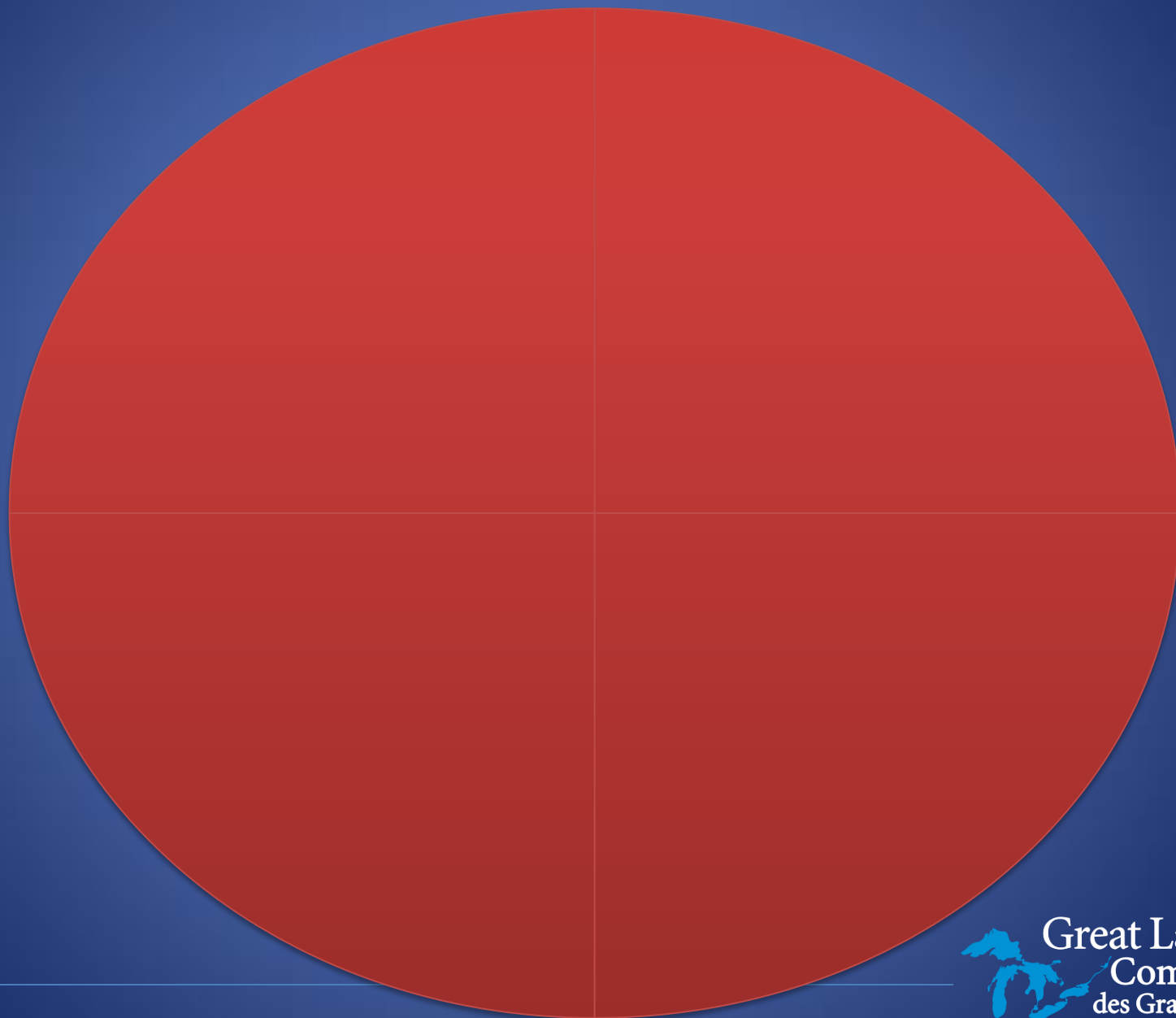
# ADAPTATION SHOULD HAPPEN JUSTLY



# Climate Impacts Vulnerability Index

1. Customizable and process based.
2. Anchored in GIS technology.
3. Useful for planning future actions, and evaluating previous actions.
4. Human impacts focused





Physical  
vulnerability

Physical  
vulnerability

Built  
environment  
vulnerability

Physical  
vulnerability

Built  
environment  
vulnerability

Personal  
vulnerability



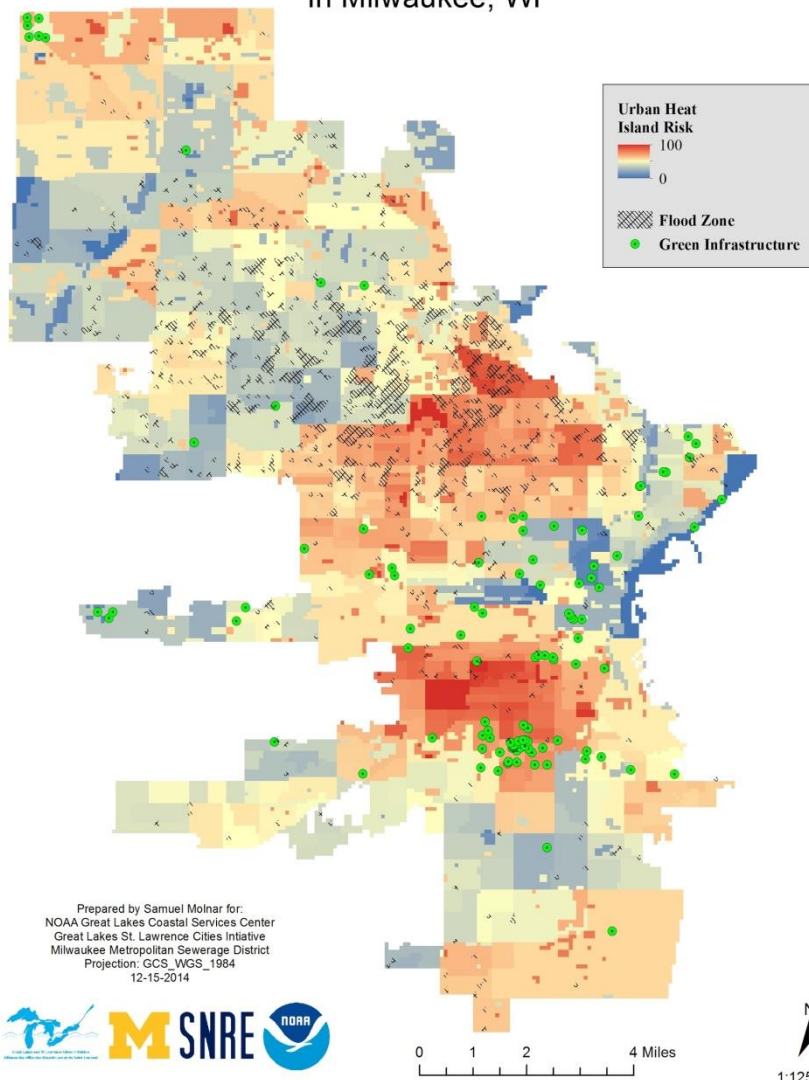
Physical  
vulnerability

Built  
environment  
vulnerability

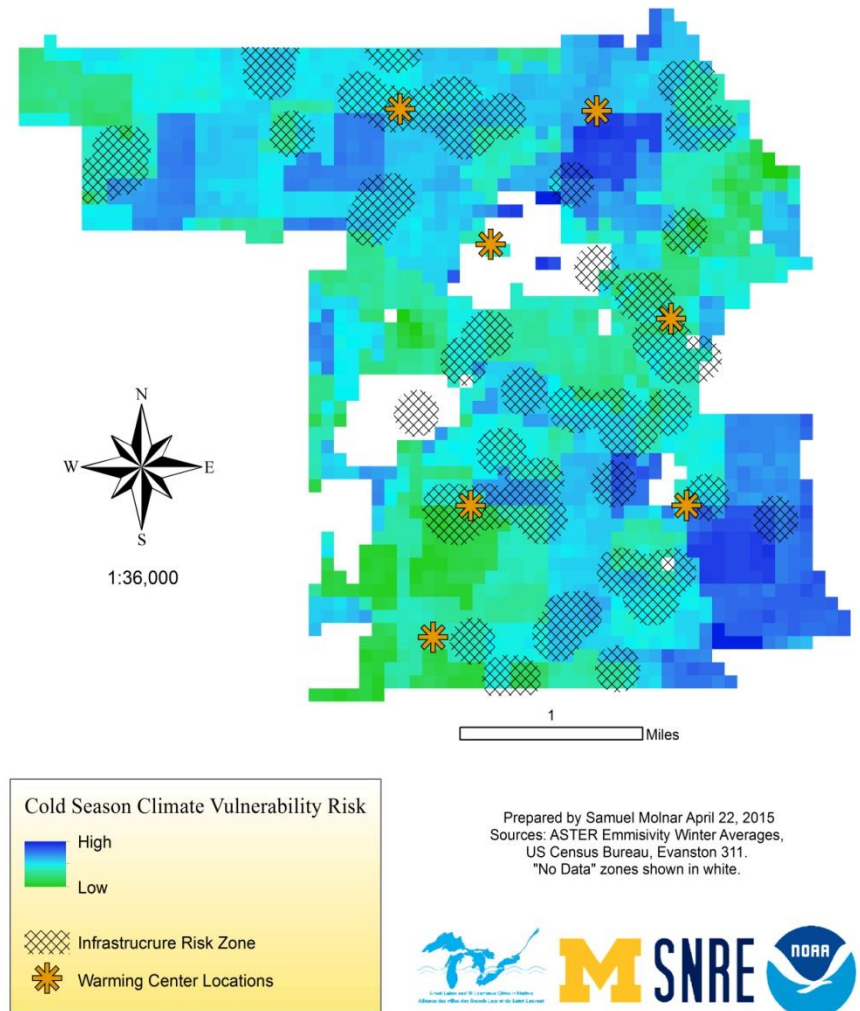
Personal  
vulnerability

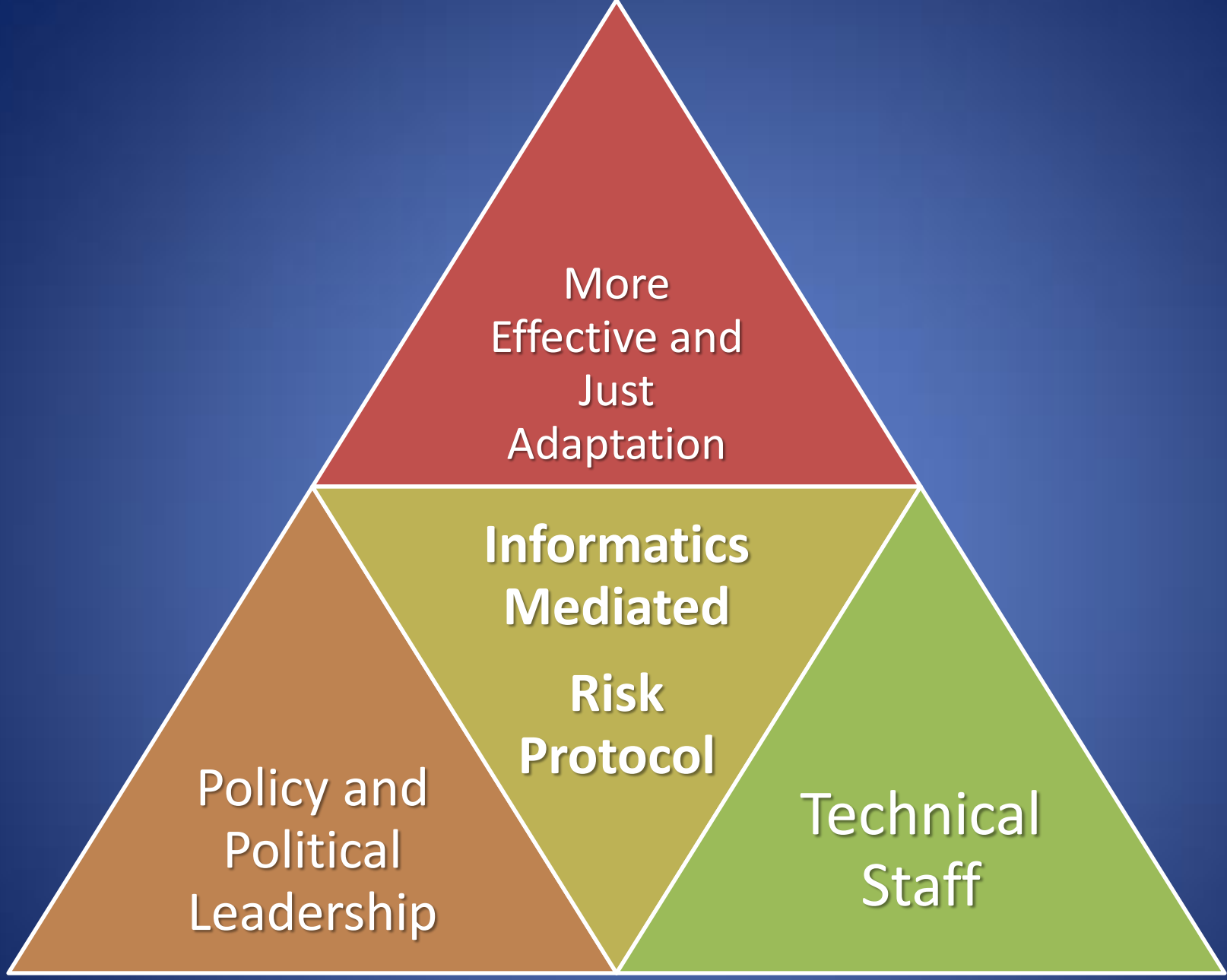
Socio-  
economic  
vulnerability

## Climate Vulnerability and Green Infrastructure In Milwaukee, WI



## Cold Season Climate Vulnerability in Evanston, IL





# Thank you

- <http://bit.ly/climatereadygreatlakescities>
- Samuel Molnar
  - 248 701 9218
  - [smolnar@glc.org](mailto:smolnar@glc.org)

## Thanks to:

- Model D Media
- University of Michigan School of Natural Resources and Environment
- The NOAA Coastal Services Center for the Great Lakes
- The Great Lakes and St. Lawrence Cities Initiative